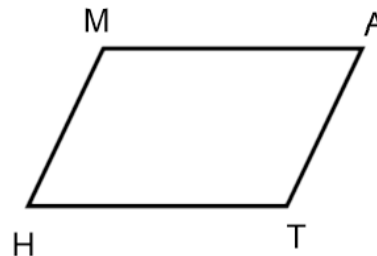
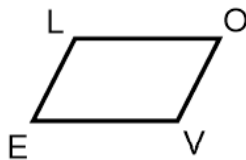


13.1 Similar Figures

MATH 7

Write your questions here!

Similar -



CORRESPONDING ANGLES

$\angle L$ corresponds to _____

$\angle O$ corresponds to _____

$\angle V$ corresponds to _____

$\angle E$ corresponds to _____

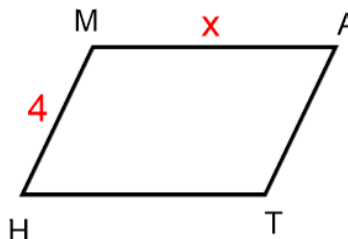
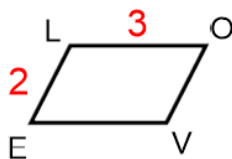
CORRESPONDING SIDES

\overline{MA} corresponds to _____

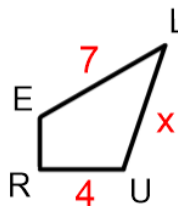
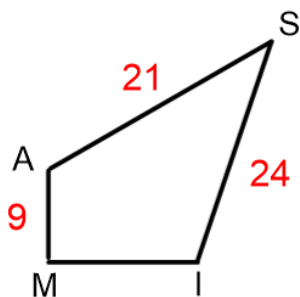
\overline{AT} corresponds to _____

\overline{TH} corresponds to _____

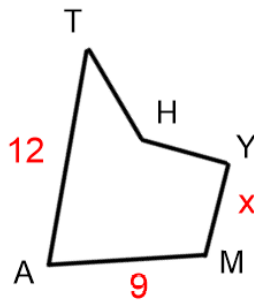
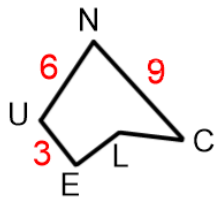
\overline{HM} corresponds to _____



Scale Factor = _____ or _____



Scale Factor = _____



Scale Factor =

SUMMARY:

Now, summarize your notes here!

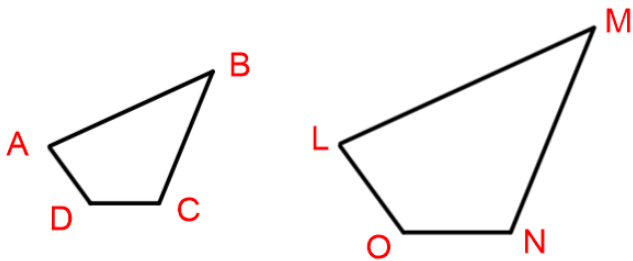
13.1 Similar Figures

PRACTICE

The following figures are similar. Fill in the blanks.

1.

$ABCD \sim$ _____



a. $\angle L$ corresponds to _____

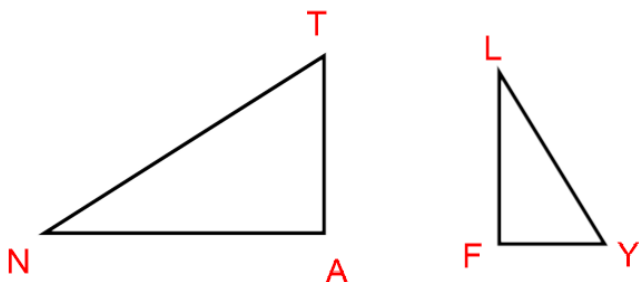
b. \overline{DC} corresponds to _____

c. $\angle C$ corresponds to _____

d. \overline{NM} corresponds to _____

2.

$ANT \sim$ _____



a. $\angle N$ corresponds to _____

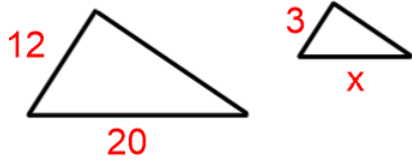
b. \overline{NA} corresponds to _____

c. $\angle Y$ corresponds to _____

d. \overline{FY} corresponds to _____

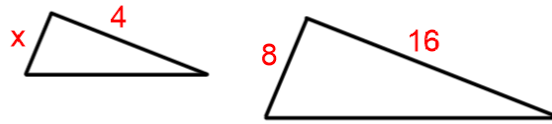
The following figures are similar. State the scale factor, set up a proportion, and find the missing side.

3.



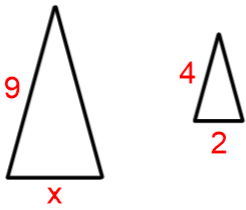
Scale Factor =

4.



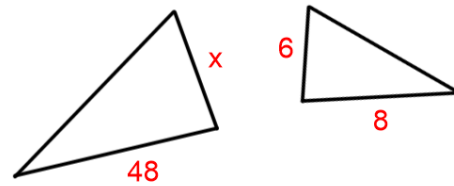
Scale Factor =

5.



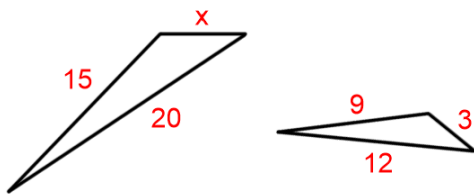
Scale Factor =

6.



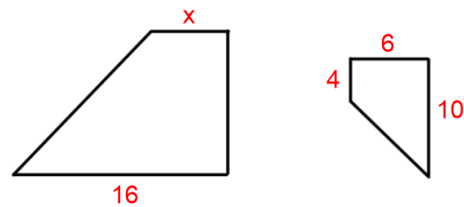
Scale Factor =

7.



Scale Factor =

8.

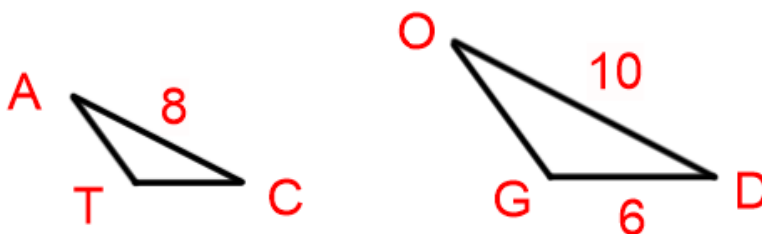


Scale Factor =

Use the similar figures shown below to answer 1-4.

- $\angle T$ corresponds to _____
- \overline{DG} corresponds to _____
- What is the scale factor?
- Find the length of CT .

$$CAT \sim DOG$$



- A 32 foot tree casts a 60 foot shadow as shown below. A man next to the tree casts a 12 foot shadow. How tall is the man? Justify your solution.



EXIT TICKET –

The scale factor of the similar figures below is 5:2. Given $TE = 10$ feet, find the length of AD .

$$KITE \sim QUAD$$

